

Group Tour Planner

2024/25



Dear prospective travellers, dear group tour operators!

Are you looking for new ideas for planning group tours in Germany?

The German Fairy Tale Route with its more than 60 stops between the Main River and the sea is an ideal destination for an eventful stay in an enchanting natural setting. Grimm's fairytale world, idyllic half-timbered houses, castles and palaces, rustic forests, cosy town hospitality or even big city flair provide an infinite number of charming things to discover. This Tour Planner provides you with basic information about our traditional vacation route as well as specific selections as examples for planning your trip. The route on the cover shows all the stops and at the same time gives a first impression of the cultural and scenic diversity the route offers.

We present the entire route, divided into seven sections with notation of distances along the way, as well as a large part of the stops from the Brothers Grimm city of Hanau to the Hanseatic city of Bremen.

On more than 40 pages you will find places, sights and events that fit especially well into fairytale and legendary group travel programmes.

During audiences and guided tours you can meet Sleeping Beauty and the Prince, Snow White, and other familiar fairytale figures. The Bartenwetzter (literally the "beard whetter", referring to woodsmen who sharpened their axes before work), the Baxmann (the protagonist of a bleak legend telling of greed, betrayal, and eternal punishment), a few night watchmen and other stalwart fellows will gladly guide you through dark alleys and tales. And, of course, there are also museum tours, staged fairy tales, and unusual banquets for small and large groups.

We would like to especially recommend our selected partner hotels, which are provided along with descriptions of individual locations.

2024 anniversary
50 years
of German Fairy
Tale Route

By the way:

The world-famous, tradition-rich German Fairy Tale Route is celebrating a very special anniversary next year: we will celebrate 50 years of fairytale travel and experiences together with our members and partners and with a variety of special and top-class events and formats along the entire destination in a fitting and atmospheric way.

For questions and further discussions, we and our colleagues on site are very happy to help at the addresses given for each main location. Current information and group travel suggestions can also be found on our website.

We wish you every success in planning and carrying out your fairytale tours!

Your team of the German Fairy Tale Route

Deutsche Märchenstraße e.V.
Kurfürstenstraße 9
34117 Kassel
+49 (0)561 92047910
info@deutsche-maerchenstrasse.de
www.deutsche-maerchenstrasse.com

Publishing Credits

Deutsche Märchenstraße e.V.

All data without guarantee

1. Hanau – Alsfeld

The Brothers Grimm – a happy childhood and youth
(128 km)



Hanau

Hanau, the birthplace of the Brothers Grimm, picturesquely situated on the Main and Kinzig, boasts a proud history that dates back to Roman times. A delightful Baroque castle on the banks of the Main with the Historical Museum, farytale museum GrimmsMärchenReich and Paper Theatre Museum as well as Wilhelmsbad, a historical spa complex with the world's oldest freestanding carousel, attract many visitors. There are interesting museums, a wide range of leisure and cultural activities and a lively city centre with many shopping and refreshment opportunities. Another popular excursion destination is the wildlife park Alte Fasanerie with 107-hectare wildlife housing around 40 Central and Northern European animal species with a good 350 specimens including a petting zoo and a bird of prey show.

Worth seeing

The Brothers Grimm monument

“No less vivid in my mind is how the two of us, Jacob and I, walked hand in hand across the Neustadt market...” On this very market square the national monument of the Brothers Grimm was inaugurated in 1896; since 1975 it has also been the starting point of the German Fairy Tale Route. Hanau has officially been allowed to bear the designation Brothers Grimm City since 2006 - Jacob and Wilhelm as well as Ludwig Emil Grimm were born here.



Schloss Philippsruhe mit historischem Museum

Original stucco ceilings, magnificent wooden inlays, the Hanau Council Cup and portraits of the Hanau Counts and the Landgraves of Hesse-Kassel allow visitors to experience past worlds in Philippsruhe Castle. The magnificent rooms of the main building house the Hanau Historical Museum with Paper Theatre Museum.



Opening Hours

Tuesday to Sunday
11 am - 6 pm

Contact and booking

Philippsruher Allee, 63454 Hanau
Phone: +49 (0)6181 2951799
museen@hanau.de
www.museen-hanau.de

Worth seeing

GrimmsMärchenReich (Grimm Fairytale Kingdom)

The GrimmsMärchenReich in the right side wing of the castle Philippsruhe displays a fairytale world on more than 340 square meters. Children from the age of 4 and adults embark on an interactive and multimedia adventure journey through seven fairytale domains. They will discover Hanau at the end of the 18th century through the eyes of a Grimm child and enter the Grimm family's parlour. You can also take a look at some unique pieces, such as Jacob Grimm's briefcase and frock coat, as well as a draft design of the Brothers Grimm's national monument from the collection of the Hanauer Geschichtsverein 1844 e.V. (Hanau Historical Society).

Opening Hours

Tuesday to Sunday
11 am - 6 pm

Contact and booking

Philippsruher Allee, 63454 Hanau
Phone: +49 (0)6181 2951799
museen@hanau.de



Guided tours

Guided town tour with the "Brothers Jacob and Wilhelm Grimm" – Immerse yourself in the world of fairy tales

Price: €160.00 | Duration: 2 hours | Group size: 15 pers.

Surcharges per guide: Foreign language, from 6 pm, as well as Sundays and public holidays: €20.00 each

Guided town tour with tour guide in historical costume

Price: €80.00 | Duration: 90 min. | Group size: 15 pers.

Surcharges per guide: Foreign language, from 6 pm, as well as Sundays and public holidays: €20.00 each



Events

The Brothers Grimm Festival

Every year, more than 80,000 visitors experience the festival against the romantic backdrop of Philippsruhe Park and Palace in the covered amphitheatre. More than 60 shows feature modern dramatizations of Grimm's fairy tales as plays and musicals.

Programme

Current show schedule at:
www.festspiele.hanau.de



Contact and booking:

Tourismus Hanau · Phone: +49 (0)6181 295738 · Touristinformation@hanau.de · www.hanau.de / www.hanau-erleben.de

Bus parking lot: Congress Park Hanau, Schlossplatz 1, 63450 Hanau

Premium-Partner

Grimm's Hotel – Brüder Grimm Stadt Hanau

At the end of 2024, we will open our new Grimm's Hotel in historic Hanau as an ideal location for business travellers and holidaymakers in the Rhine-Main region. Look forward to a holiday with culture, culinary delights and relaxation. You have 121 rooms at your disposal, including single, double & family-friendly gallery rooms as well as our popular Prince & King Suites. You can also look forward to: à la carte restaurant, conference rooms, large wellness and fitness area, event rooms for family celebrations, weddings & birthdays, hotel-owned underground car park. The hotel is not only planned as a meeting place for cultural events, but is also an official premium partner hotel of the German Fairy Tale Route e.V..



Room prices incl. breakfast
Single, double, family rooms and suites
Price from 99 €

Grimms Hotel
Maria-Montessori-Allee 4
63450 Hanau
Phone: +49 (0)30 25 8008 0
hanau@grimms-hotel.de
www.grimms-hotel.de/en



Gelnhausen

In Gelnhausen you can embark on a special journey through time. Not only does the municipality boast outstanding landmarks, but lovingly restored half-timbered buildings can be found throughout the old town alongside evidence of medieval architecture. Impressive buildings such as the Imperial Palace, the Witches' Tower, St. Mary's Church, St. Peter's Church, the former synagogue, the Inner Wooden Gate and, last but not least, the Romanesque House breathe the spirit of centuries and leave room for legends, fairy tales, and myths.

Worth seeing

Interactive Museum Gelnhausen

With opulent graphics and powerful and colourful images, the museum invites visitors to discover the varied history of the old Barbarossa city. Starting with its founding in 1170, the city's exciting history is told with the help of various different personalities. The journey through time continues through the late Middle Ages, the Renaissance with the Reformation, and the Baroque period up to modern times.



Opening Hours

Tuesday to Sunday
10.30 am - 4.30 pm

Contact and booking

Stadtschreiberei 3
63571 Gelnhausen
Phone: +49 (0)6051-830300
museum@gelnhausen.de

Guided tours

Adventure tours with figures from the city's history

conducted in true-to-the-original historical costumes. You can experience how people lived in times gone by and what everyday life was like as "street theatre".

Price: €140.00 – 235.00 | **Duration:** approx. 120 min. | **Group size:** up to 70 pers.



Literature/Literati - The poetic side of the Barbarossa city

Grimm, Grass, Goethe, Grimmshausen

Price: €100.00 | **Duration:** approx. 120 min. | **Group size:** 30 pers.

Contact and booking:

Tourist-Information Gelnhausen · Phone: +49 (0)6051 830300 · tourist-information@gelnhausen.de · www.gelnhausen.de

Bus parking lot: Parkplatz an der Kaiserpfalz - An der Burgmühle 4 und Parkplatz Uferweg



Steinau

Steinau, nestled in the beautiful Spessart landscape, has a lot to offer to friends of fairy tales, families, and those interested in culture: the excellently preserved old town with castle and town wall, the museum Brüder Grimm-Haus and the Museum Steinau, the Theatrium Steinau with puppet theatre, exciting fairytale city tours, the "Teufelshöhle" dripstone cave, the adventure park Steinau, the climbing forest and Ardea's Seenwelt (recreation and adventure area) at the gates of the city.

Worth seeing

Museum Brothers Grimm House

The Brothers Grimm House used to be the official residence of the Grimm family. Today it is a museum that wonderfully succeeds in making the life, work and world-famous fairy tales of the Brothers Grimm come alive in a palpable way, using numerous impressive exhibits and interactive tools. Friends of fairy tales can see, hear, and feel the fairy tales and thus immerse themselves in the colourful world of children's and household tales.

Opening Hours

open every day
Mar – Oct: 11 am to 5 pm
Nov – Feb: 11 am to 4 pm

Contact and booking

Verkehrsbüro Steinau
Phone: +49 (0)6663 97388
verkehrsbuero@steinau.de



Guided tours

The Brothers Grimm House guided tour

Price: €60.00 + €6.00 fee | Duration: 60 min. | Group size: 25 pers.

Guided town tour GrimmZeit in Steinau – a virtual reality adventure

Experience the childhood years of the famous Brothers Grimm in original locations in a new, fascinating way.

Price: Adult €29.90, reduced price €24.90

Fairytale city tour with tour guide in appropriate costume

Well-known and lesser-known incidents of the fairy tale come to life.

Price: €95.00 | Duration: 90 min. | Group size: 25 pers.



Events

Steinau Fairy Tale Sunday (03 August 2025)

Every year, Fairytale Sunday takes place under the motto of a different fairy tale from the collection of the Brothers Grimm. Fairy tales, music, walk acts, children's programme in the historic city centre.

Steinau Puppet Theatre (21 – 29 September 2024)

Performances for adults and children.

Theatrium Steinau

Decades of puppet theatre tradition in the old Steinau stables. Theatrium hosts puppet theatre, drama and cabaret music events are also offered.

Programme: www.theatrium-steinau.de



Contact and booking:

Verkehrsbüro Steinau · Phone: +49 (0)6663 97388 · verkehrsbuero@steinau.de · www.steinau.de

Bus parking lot: "Am Steines" street. However, buses can let their guests off in Schloßstraße above Steinau Castle. There are signs from Schloßstraße to the bus parking lot Am Steines. For the navigation system: Schloßstraße 22.

Partner

Steinau Adventure Park

The family-run Steinau Erlebnispark (Adventure Park, Eastern Hesse's largest amusement park) provides wonderful family and leisure fun in the countryside. Amidst the beautiful Spessart landscape, numerous attractions await the whole family on around 20 hectares.

Take a ride on our "Frog King" mountain & valley railway, listen to fairy tales in the "Grimm Cellar" or reserve a barbecue hut (each hut is named after a specific fairy tale and has a fairytale riddle) and enjoy a hearty barbecue party there.



Information

Thalhof 1
36396 Steinau an der Straße
Phone: +49 (0)6663 6889
info@erlebnispark-steinau.de
www.erlebnispark-steinau.de

Opening Hours

01 April – 03 October:
10 am – 5 pm
May – August: 9 am – 6 pm

2. Alsfeld – Marburg

In Little Red Riding Hood Country
(95 km)



Alsfeld

European model town with world-famous town hall and unique market square ensemble. More than 400 half-timbered houses from seven centuries make a walk through the old town an enchanting and exciting experience. In the world of fairy tales, Little Red Riding Hood plays a special role in Alsfeld. The Alsfeld Fairytale House is located in a half-timbered house dating from 1628, where the fairy tales of the Brothers Grimm are brought to life.

Worth seeing

Alsfeld Fairytale House

Let yourself be whisked away on a journey through fairy tales in a half-timbered house dating back to 1628. Discover the fairy tales of the Brothers Grimm on two floors in the individual exhibition rooms and listen to the storyteller in the storytelling room. On the upper floor there is a doll's house exhibition covering over two centuries, with several hundred dolls and 83 rooms.

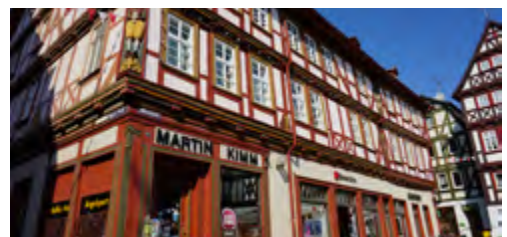
Opening Hours

Saturday: 10.30 am – 12.30 pm, 2 – 5 pm, Sunday: 2 – 5 pm
For groups at any time by arrangement



Audiowalk through Alsfeld

The audio walk takes the listener past the various sights of Alsfeld and provides interesting facts about the buildings, tells exciting stories from the past, and informs about the development of the town. Immerse yourself in Alsfeld's history and take pleasure in listening to the individual recordings.



Guided tours

Back in the times when wishing still helped

Lively fairytale performances are presented by the Alsfeld market play group against a fairytale backdrop: in front of the Alsfeld Fairytale House or on the stage in the monastery garden, these plays are performed alternatively: Little Red Riding Hood, Rumpelstiltskin

Price: €120.00 | **Duration:** 20 min. | **Group size:** 25 pers.

Surcharge English: € 30.00



Guided tour with the Brothers Grimm

Accompanied by a guide who knows how to tell interesting things about the city's history, you will also meet the Brothers Grimm.

Fairytale performance by the Alsfeld Marktspielgruppe (theatrical group).

Price: €190.00 | **Duration:** 60-90 min. | **Group size:** 25 pers.,

Surcharge English: €40.00



Experience Alsfeld's legends, fairy tales and myths!

On this special tour of the old town you will visit fairy-tale places and squares, where our city guides will tell you various "Alsfeld fairy tales", legends and legends of Karl Brodhäcker.

Price: €60.00

Events

Leo's celebrating! The Alsfeld Children's Festival

On the weekend before the hessian summer holidays, the entire city centre becomes a playground for children.

With special opening hours for the Alsfeld Fairytale House and fairytale characters crossing your path a must-be for every fairytale fan.



Alsfeld Christmas Market

The small but fine Christmas market enchants on 2. & 3. Advent with a romantic backdrop and takes visitors on a journey into the world of fairy tales at the fairy tale performance. Every day the Alsfeld Fairytale House invites for visit and Mother Hulda enchants when she shakes out her beds.

Contact and booking:

Tourist Center Alsfeld · Phone: +49 (0)6631 182165 (164) · tca@stadt.alsfeld.de · www.alsfeld.de

Bus parking lot: Busparkplatz An der Stadthalle, Jahnstr. 14 und Busparkplatz Landgraf Hermann-Straße



Neukirchen

– is the feel-good town in Little Red Riding Hood Country. In the middle of the “Schwalm” on the southern slope of the Knüll range of hills, surrounded by extensive deciduous and coniferous forests, lies the Kneipp spa of Neukirchen. Around the market square and in the adjacent pedestrian zone you will find numerous lovingly restored half-timbered houses. Since the 15th century, the Nikolaikirche (St. Nicholas’ Church) with the Türmerstube (tower) has been located here and are both well worth a visit.

Worth seeing

Fairytale House Neukirchen

You will be transported to the world of the Brothers Grimm in the fairytale House in Neukirchen. The half-timbered dwelling from the 16th century houses treasures, some of which are over 150 years old, with lovingly constructed fairytale scenes.

On fixed dates or after appropriate booking, visitors are taken on a wondrous journey into the magical world of fairy tales.

As a special highlight, visitors can enjoy listening to a storyteller or reader in the storytelling room by appointment.

Price: €60.00 | **Duration:** approx. 60 min | **Group size:** 30 pers.

Opening Hours

Mon – Fri: 10 am – 12 pm, Mon, Tue, Thu and Fri: 2.30 – 4.30 pm
Other opening hours for groups by arrangement



Guided tours

Evening tours of the historic city with St. Nicholas Church

“Listen, people! Let me tell you ...”

Price: €60.00 | **Duration:** approx. 60 min | **Group size:** 25 pers.



Contact and booking:

Pro Neukirchen e.V. · Phone: +49 (0)6694 911350 · pro-neukirchen@freenet.de · www.neukirchen.de

Bus parking lot: Parkplatz Festplatz, Am Friedhof.

Schwalmstadt

Enchanting half-timbered buildings in the middle of Little Red Riding Hood country: the traditional costume of the area is known far beyond the Schwalm. Perhaps the little red cap (“Betzel”) worn by the young girls in Schwalm costume inspired the Brothers Grimm to write down the fairy tale “Little Red Riding Hood”. Schwalmstadt with its 13 districts has a lot to offer: buildings of cultural and historical importance, museums, quaint half-timbered houses, many festivals and markets. The Schwalm traditional costume can be admired every year at the parade of the Ziegenhain Salatkirmes in the Museum der Schwalm.



Worth seeing

Museum der Schwalm

This Schwalm museum exhibits traditional costumes of the region, folk art, utensils, furniture, linen embroidery, and medieval ceramics.

Opening Hours

Monday: Closed
Tuesday – Sunday / Holidays:
2 – 5 pm

Contact and booking

Tourist-Info Rotkäppchenland
Paradeplatz 7, 34613 Schwalmstadt
Phone: +49 (0)6691 9156601
info@rotkaeppchenland.de
www.rotkaeppchenland.de



Willingshausen

Willingshausen, the oldest painters' colony in Europe, right in the heart of Little Red Riding Hood country, has become known far beyond the country's borders as the oldest painters' colony in Germany.

Worth seeing

“Malerstübchen“ Museum

The “Malerstübchen” museum reflects a piece of art history of the 19th and 20th centuries. Many paintings show everyday motifs of the time with the diversity of local Schwalm traditional costumes well worth seeing. In addition, the exhibits include the rural crafts of Schwalm linen embroidery as well as knitting and spinning products of the area.

The **Kunsthalle (art gallery) in Willingshausen** offers various exhibitions and creative courses throughout the year.

Opening Hours

Tue, Wed, Fri: 2 – 5 pm
Thu: 2 – 7 pm;
Sat + Sun:
10 am – 12 pm & 2 – 5 pm

Contact and booking

Willingshausen Touristik
Betriebsgesellschaft
Phone: +49 (0)6697 1418
info@willingshausen-touristik.de
www.willingshausen.de



Partner

Knüllwald - Hotel Sonneck

Accommodation with a fantastic view of the Knüll Nature Park: Hotel Sonneck is located in a quiet secluded location on the edge of the forest with a view over the hilly Beisetal valey, conveniently close to Kassel. This family-run hotel in the GrimmHeimat Nordhessen offers guests a modern ambience, a seasonal menu with vegetarian, vegan and gluten-free dishes as well as a vital area with swimming pool and sauna. The entrance to the premium tale hiking trail Fabelweg "Hutewald" is just a few steps away. Other popular destinations are Fritzlar, Homberg (Efze) or Melsungen.



Single, double and family rooms
Prices on request

Hotel Sonneck

Zu den Einzelnen Bäumen 13
34593 Knüllwald
Phone: +49 (0)5685 99957
info@hotel-sonneck.com
www.hotel-sonneck.com



3. Marburg – Kassel

History, castles and lake scenery
(180 km)



Marburg

If you want to follow in the footsteps of the Brothers Grimm, you'll find lots to discover in the university town of Marburg. The Brothers Grimm were already impressed by the medieval flair of Marburg with its old half-timbered houses, narrow alleys, steep staircases, romantic market square and imposing landgrave's castle. During their university studies between 1802 and 1806, this fairytale setting inspired Jacob and Wilhelm Grimm in their collection of ideas for their famous Children's and Household Tales.

Worth seeing

Grimm Dich Pfad (thematic trail)

The Grimm-Dich trail with fairytale figures at lofty heights on houses, stairs and walls entices visitors to climb through the historic old town up to the castle with its 109-metre difference in altitude. The Tourist Information provides the brochure with the 15 fairytale stops, or you can download the information on the Marburg Tourismus GmbH website.



Marburg Landgrave's Palace

The Museum of Cultural History of the Philipps-Universität Marburg offers in addition to the exhibition "Stadtgeschichten" (tales of the town) in the south wing a tour through special rooms of the palace that are steeped in history. The magnificent Prince's Hall is considered one of the most beautiful secular Gothic halls in Germany.



Opening Hours

April - October:
Tue – Sun: 10 am – 6 pm
November – March:
Tue – Sun: 10 am – 4 pm

Contact and booking

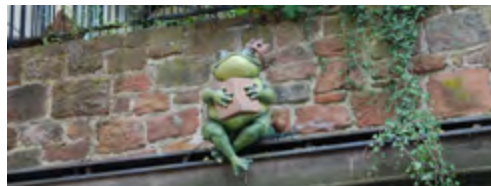
Schloss 1
35037 Marburg
Phone: +49 (0)6421 2822355
museum@verwaltung.uni-marburg.de
www.uni-marburg.de/de/museum

Guided tours

Grimm-Dich trail

Tour of the town with fairytale objects and interesting facts about the Brothers Grimm.

Price: from €80.00 | **Duration:** 90 min. | **Group size:** up to 25 pers.



In the footsteps of the Brothers Grimm (thematic tour)

City walking tour to the sites of the Grimm fairy tales and the workplaces of the Brothers Grimm

Price: from €92.00

Duration: 120 min.

Group size: up to 25 pers.

Contact and booking:

Marburg Stadt und Land Tourismus GmbH · Phone: +49 (0)6421 991223 · gästeführungen@marburg-tourismus.de
www.marburg-tourismus.de

Bus parking lot: Deutschhausstrasse as well as Erwin-Piscator House exit and park in Savignystraße (up to 30 minutes)

Partner

Hotel Marburger Hof***

If you want to discover fairy tales, you should spend your holiday in the university town of Marburg or in the surrounding Marburger Land region. The Hotel Marburger Hof is located between the main railway station and the old town, right next to the acclaimed Elisabethkirche (St. Elisabeth Church). From here it is a five-minute walk to the famous crooked, hunch-backed, winding and steep upper town of Marburg. The hotel includes a wonderful restaurant with a Spanish flair. It also offers a large number of different room categories.



Single, double and family rooms
Prices on request

Hotel Marburger Hof

Elisabethstr. 12
35037 Marburg
Phone: +49 (0)6421 59075-0
info@marburgerhof.de
www.marburgerhof.de



LAHNTAL: 7 KM

Lahntal

The Lahntal community represents a real fairytale land! Mysterious places, mystical gnome houses, gnarled trees, legendary stories and Otto Ubbelohde's nationally valuable cultural heritage. Ubbelohde was one of the fairy tale illustrators of the Brothers Grimm. Lahntal is only about 10 minutes away from the university town of Marburg and is situated along the Lahn cycle path and several national hiking trails.



Worth seeing

Otto Ubbelohde House

In the district of Goßfelden, the famous painter and illustrator Otto Ubbelohde built himself a house that is still preserved in its original form. The studio contains numerous drawings and paintings with scenes from the fairy tales of the Brothers Grimm, as well as ever-changing exhibitions. The picturesque garden is a very charming place to linger.



Opening Hours

Nov – Feb: Sat – Sun: 1 – 4 pm, March – Oct: Sat: 1 – 5 pm, Sun: 11 am – 5 pm
Group guided tours and opening hours by arrangement. Free admission.

Contact and booking: Gemeinde Lahntal · Phone: +49 (0)6420 82300 · info@lahntal.de · www.lahntal.de

Frankenberg (Eder)

Anyone visiting Frankenberg is amazed by the many centuries-old half-timbered houses with their well-kept and magnificent facades in the old town. In the midst of this enchanting architectural backdrop, the 10-towered town hall attracts special attention.



Guided tours

Tour of the old town

Special view of the ornate carvings of the historic house fronts and the imposing Liebfrauenkirche.

Price: €30.00 | **Duration:** 90 min. | **Group size:** up to 25 pers.

Guided hike through Germany's 1st certified premium city hiking trail "Frankenberger Blickwinkel" (9 km)

Price: €60.00 | **Duration:** 3 hours | **Group size:** up to 25 pers.



Contact and booking:

Ederbergland Touristik · Phone: +49 (0)6451 717672 · info@ederbergland-touristik.de · www.ederbergland-touristik.de

Bus parking lot: Am Philipp-Soldan-Forum, Teichweg 3



Bad Wildungen

The well-known spa town of Bad Wildungen in the middle of the Waldecker Land region is a feel-good oasis in a real fairytale landscape, with a picturesque half-timbered old town and the elegant spa district. On the one hand characterised by a long spa tradition of over 600 years, Bad Wildungen also manifests a lively upbeat atmosphere with a wide range of cultural and recreational activities for friends of fairy tales and holiday tourists.

Worth seeing

Snow White's house "Bergfreiheit"

Original miner's house with video show on the historical background of the fairy tale and the location. Several rooms present you with a vivid impression of the life of the dwarves in their small, typical one-room homes.

Guided tours for groups by appointment.

Opening Hours

21 March – 31 Oct:
Wed – Sun: 3 – 5 pm
1 Nov – 20 March:
Sat + Sun: 3 – 5 pm
Further dates for groups
on request

Contact and booking

Heimat- und Verkehrsverein
Bergfreiheit e.V.
Phone: +49 (0)700 07993743
schneewittchendorf@bergfreiheit.de
www.schneewittchenhaus.bergfreiheit.de



Friedrichstein Castle

Friedrichstein Castle is situated on a 300-metre-high mountain cone above Altwildungen with a magnificent view.
www.schlossfriedrichstein.de



Contact and booking:

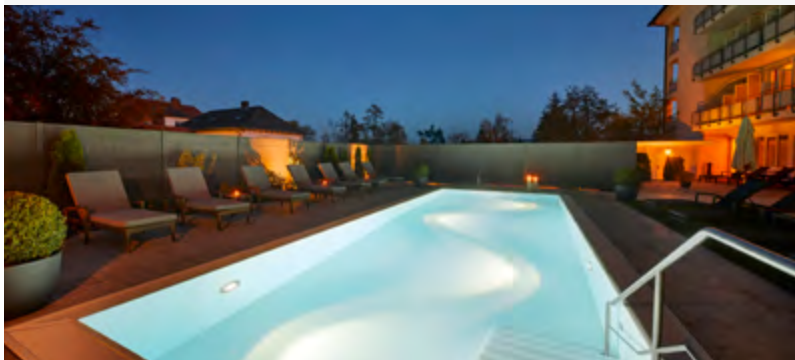
Kur- und Tourist-Information Bad Wildungen · Phone: +49 (0)5621 9656741 · info@badwildungen.net · www.bad-wildungen.de

Bus parking lot: Central bus parking in Brunnenallee 1

Premium-Partner

Göbel's Hotel Quellenhof****

The Göbel's Hotel Quellenhof in Bad Wildungen is characterised by its high-class hospitality. The size of the hotel, its furnishings and the magnificent art nouveau facade lend your stay a very special atmosphere. Situated in the beautiful Waldecker Land region, right on the German Fairy Tale Route and very close to Lake Edersee, an enjoyable stay with numerous "fairy tale" excursion options awaits you. Discover the places that inspired the Brothers Grimm to write their famous fairy tales, such as the "Snow White Village" Bergfreiheit, just a few kilometres from the hotel.



Single, double and family rooms
Prices on request

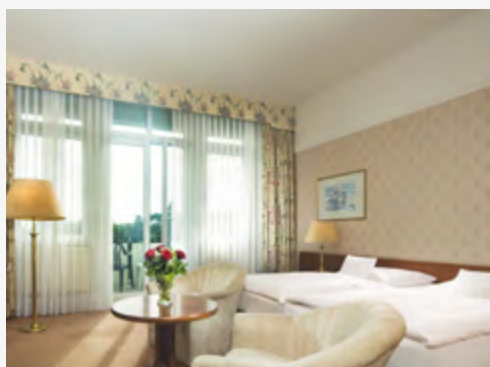
Göbel's Hotel Quellenhof
Brunnenallee 54
34537 Bad Wildungen
Phone: +49 (0)5621 807-0
info@goebels-quellenhof.de
www.goebels-quellenhof.de

Premium-Partner

Maritim Hotel ****

It is said that fairy tales "plough the soul" so that something of what a person needs to live can grow in it, such as confidence and courage, but of course also imagination.

The Maritim Hotel Bad Wildungen is located at the beginning (or end, depending where you start) of the Fairy Tale Route, in the middle of Hesse's most beautiful garden and Europe's largest spa park. We may not be a fairytale castle, but our cosy rooms, our swimming pool with large sunbathing lawn, our "Classic" restaurant, our café and, and last but not least our wellness oasis still make wishes come true.



Single, double and family rooms
Prices on request

Maritim Hotel Bad Wildungen
Dr.-Marc-Straße 4
34537 Bad Wildungen
Phone: +49 (0)5621 799-0
info.wil@maritim.de
www.maritim.de

Waldeck

Waldeck am Edersee - 420 m above sea level, town charter since 1232, whose mighty castle gave the town and the country its name, lies in the Kellerwald Edersee Nature Park. A stroll through the historic hilly and half-timbered town of Waldeck is a fascinating experience. The most impressive natural features of the landscape, such as the idyllic meadow valleys with their spring-clear rivers and streams, lend a special charm to the diversified region of this beautiful recreation area.



Worth seeing

Waldeck Castle

High above Lake Edersee, visible from afar in the Waldecker Land region, stands the mighty old knight's castle and seat of the Waldecker Counts. It is the embodiment and landmark of the town and the Waldecker Land region, but especially the connection with the lake below. The wonderful restaurant with terrace at Hotel Schloss Waldeck is well worth visiting.



Contact and booking

Hotel Schloss Waldeck · Schlosstr.1 · Phone: +49 (0)5623 589-0
info@hotel-schloss-waldeck.de · www.schloss-hotel-waldeck.de

Contact and booking (for questions in and around Waldeck am Edersee):

Touristinformation · Phone: +49 (0)5623 973782 · tourismus@waldeck.de · www.edersee.de



Schauenburg

Schauenburg is a very modern community at the gates of the cultural city of Kassel. The beautiful landscape in the Habichtswald Nature Park is a special feature of the community with its five districts. Schauenburg offers visitors many beautiful sights and natural monuments, such as the ruins of Schauenburg Castle with a magnificent view of the Bauna Valley and far into the Wolfhager Land.

Partner

Schauenburg fairytale sentry post

The artistically designed fairytale sentry post commemorates Marie Hassenpflug and Johann-Friedrich Krause, who lived in Schauenburg and were important contributors to the published collection of fairy tales of the Brothers Grimm. The sentry house exhibits original drawings from books by the Brothers Grimm, etchings and woodcuts, as well as documents from the life of fairy tale contributors.

Opening Hours

For groups at any time
on request with guide

Contact and booking

Lange Str. 2
34270 Schauenburg-Breitenbach
Phone: +49 (0)5601 925678
info@maerchenwache.de
www.maerchenwache.de



Premium-Partner

Parkhotel Emstaler Höhe****

Welcome to the 3rd generation private hotel "Parkhotel Emstaler Höhe", located in Bad Emstal directly at the spa gardens and rose garden. Enjoy the fresh and regional cuisine and the references to fairy tales by the Brothers Grimm. Sleep like Sleeping Beauty in enchanting bedrooms. With respect to culinary delights, you can look forward to one of the 500 best restaurants in Germany. The daily fresh cuisine with regional delights makes the heart of every gourmet beat faster. The wellness area "Grimm's Badehaus" offers 3 different saunas, VelusJet massage, brine spa facility, natural rock garden, floating loungers and much more all invite you to relax and enjoy yourself.



Single, double and family rooms
Prices on request

Parkhotel Emstaler Höhe

Kissinger Straße 2
34308 Bad Emstal-Sand
Phone: +49 (0)5624 509-0
info@emstaler-hoehe.de
www.emstaler-hoehe.de



4. Kassel and surroundings

UNESCO and the Brothers Grimm (155 km)



Kassel

The capital of the German Fairytale Route delights visitors from all over the world with its cultural diversity and is the ideal starting point for exploring the fairytale region. Europe's impressive mountain park, the fairytale heritage of the Brothers Grimm (Children's and Household Tales Book, UNESCO World Heritage Site) and the third highest density of museums in Germany characterise the city. An enchanting visit is promised by the informative exhibition house GRIMMWELT Kassel, as well as the annual summer Brothers Grimm Festival in the Botanical Garden and the magical Fairytale Christmas Market in winter.

Worth seeing

UNESCO Mountain Park Kassel-Wilhelmshöhe

Experience the different facets of the unique Bergpark Wilhelmshöhe, which has been a UNESCO World Heritage Site since 2013. The largest of its kind in all of Europe, the park invites you to walk or hike in splendid terrain. On the way, discover numerous beautiful examples of garden art, architecture, and culture, which already inspired Jacob and Wilhelm Grimm in their time.

The Hercules statue, image of the ancient legendary hero and landmark of Kassel, towers high above the city. From here you can overlook the entire city. The baroque waterworks at the foot of the statue have fascinated visitors for 300 years with its artful cascades, waterfalls, aqueduct, and large fountain.

The Museum Schloss Wilhelmshöhe offers a variety of museums under one roof and a magnificent view of the city and the Hercules landmark of Kassel. In the middle of the park lies the artificial castle ruin of the Löwenburg, nestled into a scenery of tournament grounds, castle garden and vineyard. From afar it looks like a romantic knight's castle from the Middle Ages.

Kassel Marketing GmbH offers a variety of different guided tours and walking tours through the park.



Worth seeing



2024
Anniversary year – 10 years GRIMMWELT
Kassel & 20 years UNESCO World Document
Heritage »Children's and Household
Fairy Tales« with a varied programme!

GRIMM
WELT
KASSEL

Welcome to the world
of the Brothers Grimm

Located in the centre of the city of Kassel and the heart of Germany, the GRIMMWELT Kassel is firmly established as the world's largest and most modern exhibition devoted to the life and work of the Brothers Grimm.

The GRIMMWELT Kassel presents the fascinating life and work of Jacob & Wilhelm Grimm, the famous linguists and collectors of fairy tales, in an experience-oriented, surprising, innovative and accessible way. It is an intriguing combination of historic objects, modern works of art and interactive installations and a space which encourages discovery, learning by research and active experience.

Discover and experience the interactive exhibition

The GRIMMWELT's interactive exhibition formats and historic items make it a place for learning by discovery and active, hands-on experience. The permanent exhibition „Fabulous from A to Z“, with a floor area of 1,300 m² on two levels, presents the multi-faceted works of Jacob and Wilhelm Grimm and gives fascinating insights into their social and political lives. Works by younger brother Ludwig Emil Grimm, who was a painter, draughtsman and the family's chronicler, provide additional insights.

UNESCO Memory of the World

The exhibition's treasure chamber contains valuable original objects, such as the first editions of the „Children's and Household Tales“. Jacob and Wilhelm Grimm's personal working copies, with their hand-written notes from 1812/1815, were added to UNESCO's „Memory of the World“ in 2005. These copies with extra-wide margins were used particularly by Wilhelm Grimm to correct and edit the first versions, delete passages containing indelicate or obscene terms, and generally make the Tales more educational and suitable for children.

Guided tours recommended

- max. 15 persons per group
- 60 or 90 minutes
- Languages: German, English, French, Italian, Russian

Opening hours:

Tue – Sun: 10 am – 6 pm | Fri: 10 am – 8 pm | Mon: closed
Easter Monday, Whit Monday, 25.12., 26.12.: 10 am – 6 pm
24.12., 31.12.: 10 am – 2 pm | 01.01.: closed

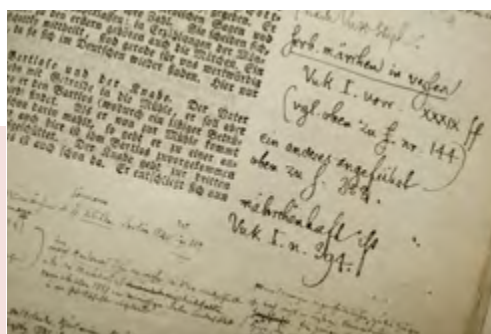
• Contact and registration groups (without guided tours):

GRIMMWELT Kassel gGmbH · Weinbergstraße 21 · 34117 Kassel · Phone:
+49 (0)561 5986190 · info@grimmwelt.de · www.grimmwelt.de/de/gruppen

• Booking guided tours: Kassel Marketing GmbH ·

Phone: +49 (0)561 707707 · booking@kassel-marketing.de · www.kassel.de

• Table reservation: Grand Café FALADA, be@faladakassel.de



Fairytale tours in Kassel and the surrounding area

In the footsteps of the Brothers Grimm

Follow the sites of their diverse work in the city centre of Kassel, including a visit of the GRIMMWELT exhibition house.

Price: €137.50 p. group plus €7.00 entry Grimmwelt | **Duration:** 90 min. |

Group size: up to 20 pers.

Enchanting discovery tours in and around Kassel

Many of the fairy tales written down by the Brothers Grimm have their origin in the densely wooded low mountain range landscape around Kassel. Embark on a delightful search for clues in the home of the fairy tale. Guided tours can be booked in different variations and lengths, for example:

- **Tour 1: Sleeping Beauty Tour** past the enchanting Reinhardswald forest
- **Tour 2: Mother Hulda Tour** through the romantic Werra Valley
- **Tour 3: Little Red Riding Hood Tour** through the Schwälmer Land

Price: €287.50 / 325.00 / 375.00 | **Duration:** 5, 6 or 8 hours |

Groups: with own bus



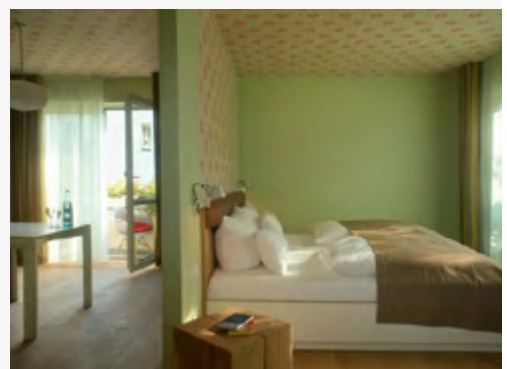
Contact and booking: Kassel Marketing GmbH · Phone: +49 (0)561 707707 · booking@kassel-marketing.de
www.kassel.de/einrichtungen/gaeste/kassel-gruppen/gruppenangebote.php

Bus parking lot: Busparkplatz Staatstheater, Papinplatz

Premium-Partner

Hotel Gude****S

The Hotel Gude, now in the 3rd generation of family ownership, combines the highest eating and drinking culture with sophisticated hospitality. A modern design and a stringent concept that engages intensively with the life and work of the Brothers Grimm accompany the guests during their stay and make time spent there a memorable experience. Situated directly in the fairytale quarter in Kassel-Niederzwehren and nevertheless very convenient to reach, guests from all over the world come together. In the Pfeffermühle restaurant, considered one of the leading culinary addresses in the region, guests are preferably offered regional and seasonal specialties.



Single, double and family rooms
 Prices on request

Hotel Gude
 Frankfurter Str. 299
 34134 Kassel
 Phone: +49 (0)561 4805-0
info@hotel-gude.de
www.hotel-gude.de

Premium-Partner

Morschen – Hotel Kloster Haydau****

Hotel Kloster Haydau is located in the heart of Germany at the gates of the documenta city Kassel. It is a unique place for leisure travelers seeking relaxation from everyday life as well as for meetings and events. High-quality, modern hotel rooms and suites, comfortable rooms in the boardinghouse "My Maison" as well as in the "Poststation" create an individual atmosphere. The ambience of the Haydau Bar and Library is characterized by the historic masonry and unique interior. The restaurant Poststation "Zum alten Forstamt" stands for modern and seasonal regional cuisine. Relaxed evenings with a varied menu and an exclusive wine selection can be enjoyed in the cosy ambience. Wellness and recreation can be found in the "Haydau Spa" or during sporting activities in the surrounding area such as hiking, cycling, canoeing.



Single, double and family rooms
Prices on request

Hotel Kloster Haydau

In der Haydau 2

34326 Morschen

Phone: +49 (0)5664 939 10-0

info@hotel-kloster-haydau.de

www.hotel-kloster-haydau.de



Fritzlar

The Middle Ages and modernity meet in the cathedral and imperial city in a very special way. The 1300-year-old past offers many architectural and historical jewels. The once most powerful city fortification in Hesse and the historical old town have been well preserved until today. The Cathedral of St. Peter, the election of Henry I as king, the visits to the city by German kings and emperors, the imperial and ecclesiastical assemblies – no one can miss these events in Fritzlar. **For visitor groups the city guide guild Fritzlar e.V. offers a wide selection of city and themed-based tours.**



Contact and booking: Touristinformation Fritzlar · Phone: +49 (0)5622 988-643 · touristinfo@fritzlar.de · www.fritzlar.de
Booking guided tours: Stadtführergilde Fritzlar e.V. · Phone: +49 (0)171 6805685 and +49 (0)5622 9149708
info@stadtfuehrungen-fritzlar.de · www.stadtfuehrungen-fritzlar.de

Rotenburg a. d. Fulda

Rotenburg a. d. Fulda is also called the “pearl on the Fulda”. The blue ribbon of the Fulda River winds its way through the middle of the small medieval town with its half-timbered houses, and offers a diversified stay not only to friends of fairy tales. With their crooked beams, the buildings look as if they have experienced a great deal, and could tell you many a fascinating or exciting story. **Let yourself be enchanted on tour with the witches “Walburga of the Witch Linden” or “Gunda of the Water Castle” who guide you into medieval Rotenburg.!**



Contact and booking:
 Tourist information Rotenburg an der Fulda · Phone: +49 (0)6623 5555 · tourist-info@rotenburg.de · www.mer-rotenburg.de

Melsungen

Surrounded by beautiful nature, nestled in meadows and forests, lies the romantic half-timbered town of Melsungen in the idyllic Fulda Valley. The abundance of beautiful half-timbered houses and the imposing town hall still bear witness today of the work of townspeople of olden days, many of whom were employed in the surrounding forests as lumberjacks. Therefore you still can find today many traces of the “Bartenwetzter” (“beard whetters” – the “beard” being an idiomatic expression for an ax). **A variety of adventuresome guided tours can be booked.**



Contact and booking:
 Kultur- und Tourist-Info Melsungen · Phone: +49 (0)5661 928989-0 · tourist@melsunger-land.de · www.melsunger-land.de



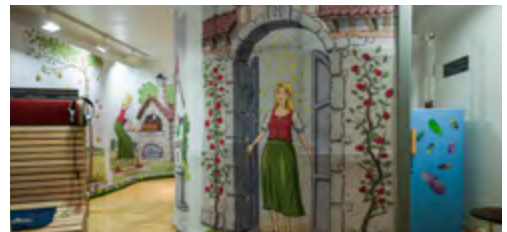
Hess. Lichtenau

Hessisch Lichtenau, the gateway to Mother Hulda Country at the foot of the Hohe Meißner mountain, presents itself as a romantic half-timbered town in the midst of an enchanting landscape. The closed half-timbered ensemble of the town centre with the old town hall and the gothic town church delight visitors again and again. One of the most famous fairy tales of the Brothers Grimm, the tale of Mother Hulda, originates from around the Hohe Meißner. The location is still alive with the fairy tales, myths, legends and exciting stories about Mother Hulda. A visit to the Holleum or a guided tour on the Mother Hulda circular route turns the Mother Hulda theme into a personal experience. Even for the deaf, the tour can be enjoyed QR code videos in German sign language or with an interpreter.

Worth seeing

Holleum

The Mother Hulda museum in the historic town hall of Hessisch Lichtenau shows the four different worlds of Mother Hulda: the fairytale world, the Meißner world, the underworld and the herb world. The visitor is interactively shown both the legend and fairytale figure, with vivid background information about the surrounding region as well.



Mother Hulda Park with Mother Hulda circular route

The Mother Hulda circular route, the centrepiece of which is the Holleum, includes 12 stations in connection with both the mythical and the fairytale characters in connection with the history of the city. Starting at the gate into the Mother Hulda Park, where the fairy tale is hauntingly illustrated on bronze plates through artwork and quotes, the path leads to the carp pond. A real eye-catcher is the huge sandstone block worked into an image of Freya, the goddess of love, luck and fertility.

Bookable guided tours with "Mother Hulda" on the Mother Hulda circular route, including visit to the "Holleum", duration approx. 2 hours



Contact and booking:

Büro für Kultur und Tourismus · Phone: +49 (0)5602 807-180 · kultur-tourismus@hessisch-lichtenau.de · www.hessisch-lichtenau.de

Bus parking lot: Busparkplatz Kreuzrasen, Friedenstraße

5. Kassel – Göttingen

In the footsteps of Mother Hulda
(182 km)



Frau-Holle-Land Geo-Nature Park

The region boasts extraordinary natural beauty, surprisingly diverse culture, and varied geology. The geo nature park takes its name from the German term for the Mother Hulda character. The world-famous fairytale figure is based on an old folk belief in an earth goddess. The landscape with its pink poppy fields and white-blossoming cherry orchards stretches from the legendary mountain of Mother Hulda, the Hohe Meißner, through the Kaufunger Forest to the Werra Valley and the former East/West German border, the National Natural Monument Grünes Band (green belt) Hesse/Thuringia. Charming half-timbered towns, mighty castles, picturesque palaces, unusual museums, a large network of certified hiking trails as well as popular cycle paths lie along the way.

Guided tours

Informative group tours led by the nature park guides not only during the cherry and poppy blossom season. Hikes, covered wagon rides, guided tour of the Schifflersgrund border museum.

Contact and booking: Geo-Naturpark Frau-Holle-Land Geschäftsstelle
Phone: +49 (0)5657 644990 · info@naturparkfrauholle.land · www.naturparkfrauholle.land

Bad Sooden-Allendorf

The picturesque brine spa Bad Sooden-Allendorf is nestled in the charming low mountain range landscape of the Werra Valley and enchants its visitors with a unique kind of half-timbered splendour. Söder Tor with salt museum, the brine spa house. . . there is much to discover here. As a symbol of the town, Mother Hulda enchants visitors on the various city tours.



Contact and booking: Stadt Bad Sooden-Allendorf, Tourismus- und Kur-AöR,
Phone: +49 (0)5652 95870 · touristinfo@bad-sooden-allendorf.de · www.bad-sooden-allendorf.de

Witzenhausen

The university town known for its cherry orchards lies charmingly embedded in the romantic Werra Valley and is the centre of one of the largest and oldest cherry growing areas in Germany. Already Jacob Grimm made a guest appearance in the attractive old town with its numerous half-timbered buildings, impressive views, and lovely cycling paths along the Werra River. A visit is worthwhile especially during the cherry blossom season, when Berlepsch Castle and Ludwigstein Castle are surrounded by a white sea of blossoms.



Guided tours

In addition to the classic and themed city tours especially recommended:

Enchanting diversity: In the scenic city tours, several figures play a role in motifs that depict the bewitching old town of Witzenhausen.

Cherry city tour: From the cherry blossom to the cherry harvest – here the theme of culture and cultivation of cherries is presented in fascinating detail. Experience the special flair of the cherry region!



Contact and booking:

Pro Witzenhausen GmbH · Phone: +49 (0)5542 6001-0 · info@kirschenland.de · www.kirschenland.de

Partner

Berlepsch Castle

Situated on a mountain spur in the heights overlooking the Werra valley, Berlepsch Castle stretches towards the sky.

It is one of the most outstanding cultural and historical buildings in the region. Discover Berlepsch Castle on exciting guided tours, lively entertainment and Knights Festivals. Indulge your senses with selected delicacies from the count's castle kitchen or experience medieval table shows in the historical premises.



Information

Schloss Berlepsch
37218 Witzenhausen
Phone: +49 (0)5542 507015
info@schlossberlepsch.de
www.schlossberlepsch.de
www.gruppen.schlossberlepsch.de

Heilbad Heiligenstadt

Heiligenstadt is the historical capital of the Eichsfeld, a health and holiday region right in the centre of Germany at the intersection of Thuringia, Hesse and Lower Saxony.

This is where the Brothers Grimm met for their last meeting in April 1838 before beginning work on the German Dictionary. Historical customs, buildings from different stylistic eras in a beautiful small town setting and a wonderfully hilly environment can be explored here.



Guided tours and Eichsfeld tours

Guided tours of all kinds: medieval or mill tours, with ecclesiastical, fairy tale, museum, or culinary emphasis.

Night watchman tour

Entertaining evening stroll by lantern light through the historic Old Town
Price: €70.00 | **Duration:** 90 min | **Group size:** 21-35 pers.



Hiking in Heilbad Heiligenstadt and the surrounding area

Extensive network of hiking trails in the Eichsfeld with certified routes that have been awarded the “dream tour” rating. Individually guided hikes on request.

Contact and booking: Tourist Information / Verkehrsverband

Phone: +49 (0)3606 677-903 · touristinfo@heilbad-heiligenstadt.de · www.heilbad-heiligenstadt.de

Ebergötzen

Wilhelm Busch spent the best time of his life in the historic “Herrenmühle” in Ebergötzen. Accompanied by the son of the miller Erich Bachmann, who was the same age, Wilhelm Busch conquered the village in his early years. Their shared childhood memories gave rise to a story describing seven pranks: “Max and Moritz”, probably the most often translated children’s book in the world. Ebergötzen is also the location that lends its name to the European Bread Museum and the 8000-year-old cultural history of bread, grain cultivation, milling and the baker’s trade.

Worth seeing

Wilhelm Busch Mill

The Wilhelm Busch Mill presents the history of the life and work of Wilhelm Busch as a memorial with mill museum and an ancient grinding system. Individually designed tours for all ages make a visit to the mill an unforgettable experience.



Contact and booking: Förderkreis Wilhelm-Busch-Stätten e.V.

Phone: +49 (0)5507 7181 · info@wilhelm-busch-muehle.de · www.wilhelm-busch-muehle.de



Göttingen

The university town of Göttingen is known for its renowned Georg-August University, whose excellent reputation has been shaped by famous researchers and more than 40 Nobel Prize winners. From 1829 to 1837, the brothers Jacob and Wilhelm Grimm taught at the famous university. The town's landmark stands on the market fountain in front of the Old Town Hall: the Gänseliesel ("Little Goose Girl"), considered the most kissed girl in the world. Over 1,000 years of city history have left their mark on the city centre, where you will find impressive churches, university buildings, and well-preserved half-timbered houses. City tourists particularly enjoy the flair of the old town. Göttingen is also known far beyond its borders as a festival city, where theatre, literature and music enjoy an especially high status.

Guided tours

In the footsteps of the Brothers Grimm - their time at the Georg-August University

The work and life stations of the famous brothers are the focus of this guided tour. We will visit the various residences of the Brothers Grimm as well as where they worked during their time as librarians and professors at the University of Göttingen.

Price: €80.00 | **Duration:** 90 min | **Group size:** 20 pers.



Around the Gänseliesel

City tour through the historic city centre with its numerous sights, while learning a lot of interesting facts from the history of this university town steeped in tradition. An ideal introduction, if you don't yet know Göttingen.

Price: €70.00 | **Duration:** 90 min | **Group size:** 20 pers.



Events

Figure Theatre Days

Every year in February, the Göttingen Figure Theatre Days will let renown German theatre companies make the puppets dance for young and old.
www.figuretheatertage.goettingen.de



Contact and booking: Göttingen Tourismus und Marketing e.V.
Phone: +49 (0)551 49980-0 · info@goettingen-tourismus.de · www.goettingen-tourismus.de

Bus parking lot: Bus park next to the main train station, Berliner Straße and near the Schützenplatz, street: Am Schützenanger

6. Kassel – Hameln

Legendary forests, Weser Renaissance and porcelain
(230 km)



Hann. Münden

Alexander von Humboldt is said to have spoken of one of the seven most beautifully-situated cities in the world in connection with the half-timbered and three-river city.

In the low mountain region of the Weser uplands, it is nestled between the three rivers Werra, Fulda and Weser and three enchanted forests, where even the Brothers Grimm found inspiration for their fairy tales. Many buildings such as the magnificent Weser Renaissance town hall, St. Blasius Church, and over 700 richly decorated half-timbered houses still reflect the history of the town today. Friends of fairy tales and legends walk in Hann. Münden in the footsteps of the most famous itinerant doctor of the baroque era: Doctor Eisenbart.

Worth seeing

Chimes

The carillon with circulating figures of the legendary Doctor Eisenbart resounds three times a day from the upper window of the ornate Weser Renaissance City Hall.



Guided tours

Hann. Münden offers attractive and organised **packages for group excursions**: exciting themed or costume tours with personalities from contemporary history, as: "In doctor Eisenbart's footsteps", boat trips on the Fulda and Weser, "Consultation with Dr. Eisenbart", or a guided tour through the Ratsbrauhaus with beer tasting.

You can find the right tourist excursion for every occasion.



Contact and booking: Hann. Münden Marketing GmbH

Phone: +49 (0)5541 75313 · info@hann.muenden-marketing.de · www.hann.muenden-erlebnisregion.de

Bus parking lot: Parkplatz am Tanzwerder/Weserstein, Gustav Blume Weg 7

Sleeping-Beauty-Town Hofgeismar

The Sleeping-Beauty-Town Hofgeismar with historic half-timbered buildings is located in the middle of the Reinhardswald Nature Park in the three-state corner of Hesse/Westphalia/Lower Saxony and stands out with its redesigned market square with Sleeping Beauty monument. The Sleeping Beauty Castle Sababurg, the fairytale castle of the Brothers Grimm (closed until 2026 due to extensive renovation work, visits to the outdoor area possible in the summer months) and the enchanting Trendelburg are outstanding with their idyllic locations. The Primeval Forest Sababurg, the oldest nature reserve in Hesse, with beeches, alders and old oak trees – some over 800 years old – and the Sababurg Zoo, the oldest one of its kind in Europe, captivate young and old alike.



Guided town tours, including a tour with the „Captain of the Town Guard“, legendary tours with “Knight Dietrich” in the Primeval Forest Sababurg. In the summer months, performances of Sleeping Beauty and Prince in the palace of the Sleeping Beauty Castle Sababurg.
www.hofgeismar.de



Contact and booking: Tourist Information Naturpark Reinhardswald
Phone: +49 (0)5671 999222 · mail@naturpark-reinhardswald.de · www.naturpark-reinhardswald.de

Premium-Partner

Hotel Trendelburg Castle ***

In the heart of the “German Fairy Tale Route” lies the enchanted fairytale castle of Trendelburg, where once Rapunzel let down her hair to her admiring prince. Unique in its originality, this castle hotel enchants its visitors with over 700 years of history. Lovingly guarded and maintained, the castle jewel of the Weser uplands rises high above the Diemel River. Here you will find an enchanting spot to enjoy perfect rest and relaxation.



Single, double and family rooms
Prices on request

Hotel Trendelburg Castle
Steinweg 1
34388 Trendelburg
Phone: +49 (0)5675 9090
info@burg-hotel-trendelburg.com
www.burg-hotel-trendelburg.com

Partner

Hotel Wesertal - Hotel Kronenhof***

Spend enchanting days at the family-run Hotel Kronenhof. The idyllic half-timbered village of Oedelsheim is located directly on the Weser and at the foot of the legendary Reinhardswald forest. Hotel Kronenhof offers a varied entertainment programme for bus groups, such as a trip on the hotel's own fairytale railway and much more. The family will be happy to advise you personally for your group trip to the fairytale Weser Valley.



Single, double and family rooms. Group prices on request. Barrier-free rooms. Lift available. No single room supplement.

Hotel Kronenhof
Bremer Straße 11
34399 Wesertal-Oedelsheim
Phone: +49 (0)5574 9583-0
info@kronenhof-wesertal.de
www.kronenhof-wesertal.de

Partner

Museum Fürstenberg Castle

The Brothers Grimm are not the only ones to say "Table, deck yourself!" – Since 1747, the FÜRSTENBERG porcelain manufactory has been dedicated to a demanding table culture. The Museum Fürstenberg Castle with its large visitors' workshop tells of inventiveness and craftsmanship from over 275 years of manufacturing history. The castle ensemble also houses the manufactory store and the bistro CARL. The grandiose view from the panorama terrace in the Weser valley is breathtaking. "Historical windows" are provided by information steles with historical pictures and graphics explain about the history of the castle and the manufactory.



Museum Schloss Fürstenberg
Meinbrexener Straße 2
37699 Fürstenberg / Weser
Phone: +49 (0) 5271 96677814
service@fuerstenberg-schloss.com
www.fuerstenberg-schloss.com



Höxter

Admire historic half-timbered houses in a lively small town. Höxter is home to some of the most important buildings of the Weser Renaissance, well worth seeing. Discover a peaceful river landscape. If you want to enjoy nature from a different perspective, simply go aboard a Weser boat. The Brothers Grimm already knew about this town's special location; they not only cultivated close friendships here, but also collected some of their fairy tales and legends from Höxter.

Worth seeing

Corvey Castle

Directly at the gates of Höxter lies the UNESCO World Heritage Site of Corvey, a conjunction of architecture, culture and history. The 1,200-year-old Carolingian westwerk (western façade) forms the core of the World Heritage Site, visible from afar. www.corvey.de



Huxarium Garden Park

Garden art and history meet in the Huxarium Garden Park. The Remter garden behind the monastery walls of the World Heritage Site Corvey is a modern interpretation of the monastery garden and the archaeology park in the Weser arch makes the medieval city of Corvey a multimedia experience. www.huxarium-gartenpark.de



Guided tours

Höxter in myths, anecdotes and legends

Listen to the stories – as they say, "It once happened here!"

Walk a little, see a lot

A city walk for people with reduced mobility

Price: €75.00 each | **Duration:** 90/75 min. | **Group size:** approx. 25 pers.



Contact and booking:

Touristinformation Höxter · Phone: +49 (0)5271 963-4242 · info@hoexter-tourismus.de · www.hoexter-tourismus.de

Bus parking lot: Parkplatz Albaxer Straße und Milchweg, Parkplatz Godelheimer Straße

Partner

Flair Hotel Stadt Höxter

Let yourself be enchanted by the fairytale flair of our hotel. The family-run hotel is located in direct proximity to the Weser river and the historic center of the city. Bright, tastefully furnished guest rooms offer you in different categories a lot of comfort and a cozy atmosphere, free WLAN, a café, a bar and a restaurant. A special highlight are our two fairy tale rooms "Frog King" and "Frau Holle".

There is a lot to discover on the historical traces in the UNESCO World Heritage Corvey as well as the supra-regional European Cycle Route R1, the popular Weser Cycle Route R99 and the Monastery Garden Route.



Single, double and family rooms
Prices on request

Flair Hotel Stadt Höxter
Uferstraße 4
37671 Höxter
Phone: +49 (0)5271 69790
info@hotel-stadt-hoexter.de
www.hotel-stadt-hoexter.de

Holzminden

When visiting the city of scents and aromas, all the senses are in demand. Holzminden on the Weser can look back to a far-reaching history of fragrances and invites visitors to immerse themselves in the wide world of scents and flavours with "fragrant offers".



Guided tours and worth seeing

"Fragrant City Walk"

With its 17 fragrance steles along the points of interest, Holzminden invites its visitors to explore the city with their noses.

From autumn 2024, **Sensoria** – House of Fragrances and Aromas will present a Europe-wide unique, interactive exhibition on smell and taste between the Weser and the historic Old Town.



Contact and booking: Stadtmarketing Holzminden GmbH
Phone: +49 (0)5531 9929 0 · info@stadtmarketing-holzminden.de · www.stadtmarketing-holzminden.de

Bus parking lot: Stahler Ufer



Münchhausenland Bodenwerder / Polle

Through Vogler, Ottensteiner Hochebene, Ith and "Rühler Switzerland", the joint municipality of Bodenwerder-Polle offers the opportunity to explore the special features of nature in the Weser uplands in addition to the towns. The Münchhausen town of Bodenwerder lies directly on the Weser, embedded in the varied hilly landscape of the Weser uplands. In addition to the numerous fairytale figures, the incomparable storyteller Baron von Münchhausen also finds his place on the German Fairy Tale Route. Hieronymus Carl Friedrich Baron von Münchhausen (1720 - 1797) achieved world fame with his exaggerated imaginative tales. On a tour through the historic old town, numerous sculptures, monuments and murals relate his outlandish experiences.

Worth seeing

Münchhausen Museum Bodenwerder

In the Münchhausen Museum you will learn interesting facts about his life and his incredible and adventurous stories. Memorabilia from his personal possession as well as pictures and documents trace important stages in the life of Baron von Münchhausen.

www.muenchhausen-museum-bodenwerder.de

On a walk through the historic old town, numerous sculptures, monuments and murals tell of his experiences. In the summer months (May to Sept./ Oct.), the Munchausen musical (2nd +4th Sunday of the month) and the Munchausen play (1st Sunday of the month) delight small and large audiences. Free admission.



Polle and Cinderella

Where the Weser flows around the much-acclaimed great bend, there lies the enchanting historic Cinderella village with its picturesque centre, dreamy lanes, and the castle of the Counts of Everstein, high up on a mountain spur. A walk around the castle on the Cinderella Trail and a visit to the Haus des Gastes with the Cinderella Room lend a fairytale flair.

From the open-air stage, the amateur drama group enchants fans of fairy tales with their Cinderella plays in grandiose costumes. (every 3rd Sunday from May to Sept.) Admission free



Contact and booking:

Tourist-Information Bodenwerder · Phone: +49 (0)5533 40541 · E-Mail: info@muenchhausenland.de · www.muenchhausenland.de

7. Hameln – Bremen

Weser River and Hanseatic flair
(336 km)



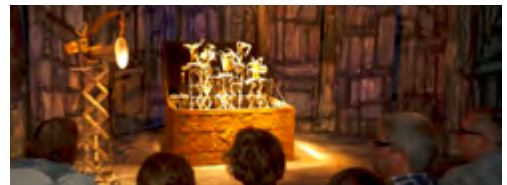
Hameln

The Pied Piper town of Hameln has an unmistakable charm. The old town has been renovated in an exemplary manner and is a magnificent architectural monument of international standing. Architecture enthusiasts describe it as a jewel of the Weser Renaissance. The city centre with its magnificent buildings and busy shopping streets invites you to stroll and shop. The small alleys – winding, quiet and romantic – with their lovingly restored half-timbered houses are an insider tip. In the middle of the beautiful Weser uplands, Hameln is also the starting point for boat and ship excursions.

Worth seeing

Hameln Museum

Probably the largest Pied Piper collection in the world with exciting and sad highlights of Hameln's history as well as the unique mechanical Pied Piper Theatre. Opening hours: Tue – Sun, 11 am – 6 pm
www.museumhameln.de



Guided tours and events

Varied adventure tours, city tour with greeting of the Pied Piper, guided tour of the Hameln Museum, and tour of the surrounding "Enchanting Weser Uplands".

Pied Piper open-air play: Imposing appearance of the Pied Piper with his entourage. Mid-May to mid-September, Sundays at 12 am in the old town. Free of charge.

Pied Piper Musical "Rats": Humorous and lively interpretation of the Pied Piper saga. End of May to beginning of September, Wednesdays at 4:30 pm in the old town. Free of charge. www.musical-rats.de



Contact and booking:

Tourist Information Hameln · Phone: +49 (0)5151 957823 · touristinfo@hameln.de · www.hameln.de

Bus parking lot: Parking lot "Deisterallee" (near city center) and parking lot "Am Anleger"

Premium-Partner

Schlosshotel Münchhausen*****S

In the Weserbergland Nature Park, at the gates of the Pied Piper town of Hameln, stands the magnificent Weser Renaissance Palace, built in 1570 by an ancestor of the famous Lier Baron, in the midst of one of the earliest English landscape gardens in Europe. In 1716, Tsar Peter the Great admired the famous pineapple cultivation. Behind the 440-year-old castle walls is a charming 5-star superior hotel with 68 individually furnished rooms and exclusive suites offering a historic ambiance with modern comforts, as well as 3 restaurants and 12 function rooms. The HILMAR gourmet restaurant presents culinary delights at the highest level.



Single, double and family rooms
Prices on request

Schlosshotel Münchhausen
Schwöbber 9
31855 Aerzen bei Hameln
Phone: +49 (0)5154 70600
info@schlosshotel-muenchhausen.com
www.schlosshotel-muenchhausen.com

Premium-Partner

Hotel Stadt Hameln****

Spend magical days in the beautiful Weser uplands. Experience dream-like hours in the historic walls of the hotel and leave everyday life behind you on adventure tours. The hotel has 81 lovingly furnished rooms, an excellent restaurant with seating for up to 120 guests, a beachclub „Weser Glück“, and the charming Weser terrace. Hameln's pedestrian zone is only a 5-minute walk away.

Let yourself be enchanted by the city guide and his stories as well as by the historic old town. The young, dynamic team of the Hotel Stadt Hameln is waiting to fully pamper you in a family atmosphere and is looking forward to your visit!



Single, double and family rooms
Prices on request

Hotel Stadt Hameln
Münsterwall 2
31787 Hameln
Phone: +49 (0)5151 9010
info@hotel-stadthameln.de
www.hotel-stadthameln.de

Bad Oeynhausen

The popular spa town looks back on a long tradition as a health resort with healing thermal springs. The picturesque Spa Park is located right in the heart of the lively town, whose historic buildings are reminiscent of the sophisticated spa culture of the previous century.



Worth seeing

German Fairy Tale and Weser Legend Museum

The museum with its focus on cultural history is located in one of the most beautiful villas at the picturesque spa gardens and leads one into the world of fairy tales, myths and legends. It introduces the Brothers Grimm and other fairy tale collectors and well-known authors of fairy tales. Temporary exhibitions on cultural and art historical aspects complete the offer.



Guided tours

Bad Oeynhausen has experienced extremely lively times. The rich history of the town and the spa gardens offer many themes for guided tours and walks, such as the fairy tale walk and the art walk.

Contact and booking: Staatsbad Bad Oeynhausen GmbH

Phone: +49 (0)5731 1300 · tourist-information@badoeynhausen.de · www.staatsbad-oeynhausen.de/tourismus

Partner

Bückerburg Castle

Bückerburg Castle – family property of the Counts of Holstein-Schaumburg and later Princes of Schaumburg-Lippe for over 700 years – presents itself as a Renaissance castle with historic halls and rooms spanning four centuries. Situated in the city centre, the castle is an attractive magnet far beyond the region. It is surrounded by extensive gardens and parks covering more than 80 hectares.

Concerts, exhibitions and conferences round off the castle's varied calendar of events, and many rooms can also be hired for private occasions such as celebrations or conferences. The café/restaurant "Alte Schlossküche" is open to all visitors to the castle.



Schloss Bückerburg

Schlossplatz 1

31675 Bückebug

Phone: +49 (0)5722 955830

info@schloss-bueckeburg.de

www.schloss-bueckeburg.de

Wiedensahl – Wilhelm Busch Land

“There’s always a surprise where you didn’t expect it.”

The idyllic village of Wiedensahl in the Schaumburger Land, between the Weser and the Steinhuder Meer, is the ideal starting point for a journey of discovery in the footsteps of the comic pioneer Wilhelm Busch, from whose pen many other well-known stories have sprung besides Max and Moritz.

Worth seeing

Wilhelm Busch Birthplace

Wilhelm Busch was born here in 1832 and spent a good 40 years of his life in his home village. Immerse yourself in the artist’s picture stories, books and paintings in his birthplace with library and in the museum located in the old vicarage. Current exhibitions and events complete the offer. Guided tours in both houses and individual programmes for day stays are offered.

Guided tour in each case:

Price: €30.00 plus admission | **Duration:** 45 min. | **Group size:** up to 20 pers.

Opening hours: for groups individually



Contact and booking:

Wilhelm Busch Land · Phone: +49 (0)5726 388 · wilhelm-busch@wiedensahl.de · www.wilhelm-busch-land.de

Rehburg-Loccum

The town with its five districts lies in the midst of the varied landscape of the Steinhuder Meer Nature Park. In the 18th century, Bad Rehburg was especially artistically designed by the Hanoverian royal family. Culture and nature abound here: a historic spa complex Romantic Bad Rehburg with promenade paths, Cistercian monastery Loccum, open-air museum Dino-Park Müncheshagen, a bird sanctuary, pilgrimage paths and in Bad Rehburg a Brothers Grimm Fairy Tale Path with fabulous views of the Steinhuder Meer all wait to be discovered.



Guided tours

The “Romantic Bad Rehburg” offers entertaining and informative guided tours of the facility.

The most diverse landscapes can be experienced by following the guided tours for promenades, fairy tales, herb lore and forest walks or the Rehburg-Loccum round trip by bus.



Contact and booking: Tourist-Information der Stadt Rehburg-Loccum

Phone: +49 (0)5037 300060 · touristinfo@rehburg-loccum.de · www.rehburg-loccum-tourismus.de

Nienburg

The charming town with beautiful half-timbered buildings and Renaissance gables looks back on a 1000-year history. Many legends, fairy tales and stories are entwined around the historic old town.

The Weser also beckons with the “Flotte Weser” passenger ships. Europe’s most beautiful weekly market offers regional products; in springtime, the impressive flower market and freshly harvested asparagus dominate the scene.



Worth seeing

Discover Nienburg on the bear trail

A special circular walk: Large, white bear paws lead to 32 sights with information boards in Nienburg’s old town. 500 paws on a 3.3-kilometre-long tour. Brochures with explanations are available from the Tourist Information Centre.



Contact and booking:

Mittelweser-Touristik GmbH · Phone: +49 (0)5021 917630 · info@mittelweser-tourismus.de · www.mittelweser-tourismus.de

Partner

Ritter Rost Magic Park Verden

In the historic cathedral and equestrian town of Verden, horse-related accents are everywhere.

However, if you are looking for fairy tales in Verden, you can’t avoid the “Ritter Rost Magic Park” amusement park. Here the whole family, but especially children up to about 12 years of age, can enjoy an exciting and unforgettable time. The fairytale forest enchants not only children with the enchanting fairy tales of the Brothers Grimm. Spectacular magic shows for young and old offer spellbinding moments and exciting magic tricks. Many rides, the petting zoo and a great playground with a giant slide make the day a high point of any family trip.



Ritter Rost – Magic Park Verden

Heideweg 5-7

27283 Verden

Phone: +49 (0)4231 661110

info@magicpark-verden.de

www.ritterrost-magicpark.de

Opening hours:

April – October



Bremen

1200 years of tradition and cosmopolitanism characterise Bremen, the Hanseatic city on the Weser and home of the world-famous Bremen Town Musicians. Unmistakable landmarks are the magnificent Weser Renaissance town hall and the venerable figure of Roland, both UNESCO World Heritage Sites.

Bremen is a big city with all facets of old and contemporary urban life – history, tradition, high tech, science and space travel. The numerous museums offer a variety of things to do. The Schlachte waterfront promenade and the Vegesack Maritime Meile invite you to stroll along the Weser to take in the sights. The enchanting “Schnoor” district and the summer open-air play of the Bremen Town Musicians lend a fairytale ambience.

Worth seeing

Bremen’s numerous museums offer a wide variety of activities and guided tours, such as:

Bremen Story House

Bremen city history from the middle of the 17th to the early 20th century comes vividly alive, played by Bremen celebrities in historical costumes.
www.bremer-geschichtenhaus.de



botanika

Explore amazing plant phenomena. Discover the colourful splendour of Asian rhododendrons and azaleas in the three large greenhouse worlds. Roam the mountain worlds of the Himalayas, or try to make contact with gentle, exotic fish.
www.botanika-bremen.de

Universe

The Universum Bremen is a science centre with a distinctive experiential character. An extraordinary discovery tour into the world of science with three themes: Technology, Man, Nature.
www.universum-bremen.de



Kunsthalle (Art gallery)

The Kunsthalle, not far from Bremen’s market square, is one of the most important and beautiful galleries in Europe. The diverse collection spans works of art from seven centuries.
www.kunsthalle-bremen.de

Guided tours (exemplary from the large and varied offer for groups)

Bremen is fabulous

Immerse yourself in the fairytale world of Bremen's legends and stories.
Price: €120.00 | **Duration:** about 120 min. | **Group size:** up to 25 pers.

Guided tour through the historic city centre

Learn more about the history of the Hanseatic city on foot.
Price: €120.00 | **Duration:** 120 min. | **Group size:** up to 25 pers.

Bus and Talk

City tour in own bus. | **Price:** €120.00 | **Duration:** 120 min.

Bus and Walk

Discover the historical and yet also modern Bremen
Price: €160.00 | **Duration:** about 3 hours | **Group size:** up to 25 pers.



Booking:

Phone: +49 (0)421 30800-10
 info@bremen-tourism.de
 www.bremen.eu/tourism

Events

Open Air Town Musicians

In the Hanseatic city they tell their story personally, life-size, open air, and free of charge. Sundays from May to September at 12 noon on the Domshof in the city centre. Fancy some more? All events on: www.bremen.de/highlights

Contact and booking:

Bremen Information Böttcherstrasse · Phone: +49 (0)421 30800-10 · info@bremen-tourism.de · www.bremen.eu/tourism

Bus parking lot: in different parts of the city: <https://vmz.bremen.de/busparkplaetze>

Partner

Best Western Hotel Bremen City***

Once upon a time there were four very famous animals who unfortunately never quite made it to Bremen. If the Bremen Town Musicians had reached our beautiful Hanseatic city, they would certainly have stayed at the Best Western Hotel Bremen City. The relief of the Town Musicians on the outer facade that bears witness to Bremen's most famous immigrants is protected as a landmark. The 3-star bed and breakfast establishment is centrally located between the main railway station and the city centre. From here you can go on a voyage of discovery and meet the four Town Musicians at Bremen's Town Hall.



Single, double and family rooms
 Prices on request

Best Western Hotel Bremen City
 Bahnhofstr. 8 · 28195 Bremen
 Phone: +49 (0)421 30870
info@bremen-city.bestwestern.de
www.bremen-city.bestwestern.de



Buxtehude

The Hanseatic and fairytale town of Buxtehude is located in the vacation region “Altes Land am Elbstrom”. Maritime flair wafts through the historic old town with its many half-timbered houses. It was the first German city to be built according to plan around a central harbor basin. Buxtehude is also known as the town where dogs bark with their tails and where hare and hedgehog race each other. The writer Wilhelm Schröder (1808-1878) first published the story of the “race between the hare and the hedgehog” on the Buxtehude Heath in 1840. After the Brothers Grimm included the fairy tale in their “Children’s and Household Tales” in 1843, it became world famous.

At the Buxtehude Museum you can let hare and hedgehog run around the race at a hands-on station, watch various video versions of the fairy tale, or listen to the fairy tale in different languages, including German dialect. With the slogan “Ick bün al hier” (I’m here all the time), you can learn stories and anecdotes about Buxtehude with charm and esprit on the city tours with guides in rabbit or hedgehog costumes.

Guided tours

Guided city tour:

With the hare or hedgehog through Buxtehude; Current dates at: www.buxtehude.de/hase-und-igel

Events

Winter Fairy Tale Buxtehude

29 Nov – 24 Dec 2024 | 28 Nov – 24 Dec 2025

Fairytale Christmas market in the historic old town in a cozy atmosphere and the lovingly designed fairytale forest on the town hall square. Stroll through the Christmas-decorated city center and look forward to sweet and hearty Christmas treats, original handicrafts and daily changing promotions.

www.wintermärchen-buxtehude.de



Contact and booking:

Service Center Culture & Tourism · Phone: +49 (0)4161 501-2345 · stadtinfo@stadt.buxtehude.de · www.buxtehude.de/tourismus

Berlin

„Then came the final decades in Berlin.“ (Hermann Grimm)

In 1840, after a three-year interlude in Kassel as exiles and without employment, the new King of Prussia, Frederick William, summoned the brothers to Berlin as members of the „Academy of Sciences“ with a special salary. There, it is possible to visit their graves today in the old St. Matthew’s Cemetery.

Partner

Grimm’s Hotel Berlin-Potsdam

Between the metropolis and the Mittelmark region - stay overnight in a fairytale setting at the gates of Berlin at Grimm’s Hotel in Teltow. Look forward to 85 fairytale rooms including two-storey family rooms and suites. Also available are modern conference rooms with terrace access, a sauna and fitness area and a roof terrace with a view over Teltow. In addition to the rooms with magic, you will be spoiled with seasonal cuisine in the hotel restaurant “Tischlein deck’ Dich”. The excellent location in Teltow makes our bicycle-friendly hotel an ideal starting point for excursions to Berlin, Potsdam and the Fläming travel region.



Single, double, family rooms and suites
Prices from €94.00

Grimms Hotel
Gonfrevillestraße 2
4513 Teltow
Phone: +49 (0)30 2580082000
berlin-potsdam@grimms-hotel.de
www.grimms-hotel.de